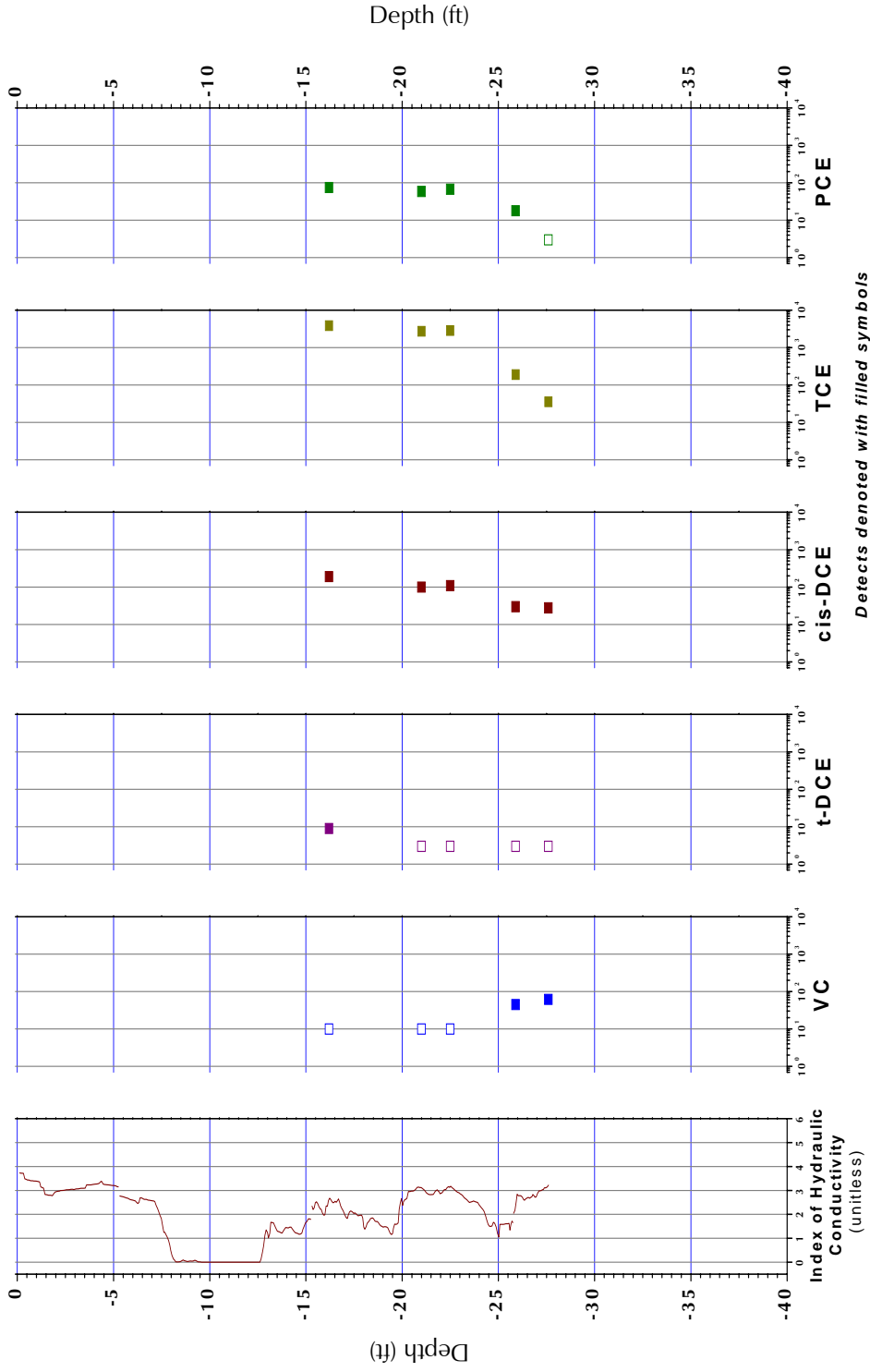


**B-501**



Detects denoted with filled symbols  
 Non-Detects denoted with empty symbols at detection limit

**Profile B-501, I<sub>k</sub> RECORD AND SELECTED VOC ANALYTICAL RESULTS**

Date Sampled: 5/10/2005

ERM, Wayland, Massachusetts

Source: groundwater quality profiling and mobile laboratory data

Path: 0:\proj03\1473-R Wayland\Spring2005\Data\VOC\_Chem\_B501.opj

Date: 05-17-05 amm



**STONE ENVIRONMENTAL INC**